

The Problem

These innocent victims and too many like them, died from impaired driving crashes. All of the victims are deeply missed by their families and friends, whose lives will never be the same.

Angela Apostadiro, 17, died February 23, 2010. The van she was riding in was hit by a drunk driver with a blood alcohol content level greater than the legal limit of 0.08. The driver had a prior arrest for DUI.

“Our Angela is so missed by everyone. She was such a benefit to all. Angela was so kind. She was truly my miracle baby and also she was my best friend. Angela will be the world’s biggest loss.” –Angela’s Mom.

Gary “Baba” Gonsalves, 17, died on January 20, 2010. His car was hit by a drunk driver with a blood alcohol content level greater than the legal limit of 0.08.

“Your laughter, your beautiful smile, your tears of joy and pain, your compassion filled heart, your warm embrace. We miss you... but we will cherish you forever... Through us, your daughter will know and love you.” –Baba’s Aunty.

Aliyah Braden, 17 months, died on May 23, 2009. The vehicle she was riding in was hit by a drunk driver with a blood alcohol content level greater than the legal limit of 0.08.

“Aliya was so happy. Her smile and twinkling eyes brought joy to her family, friends and everyone lucky to meet her. Now, her potential to share those gifts is gone.” –Aliyah’s Dad



Angela Apostadiro
November 1992 - February 2010



Gary “Baba” Gonsalves
June 1992 - January 2010

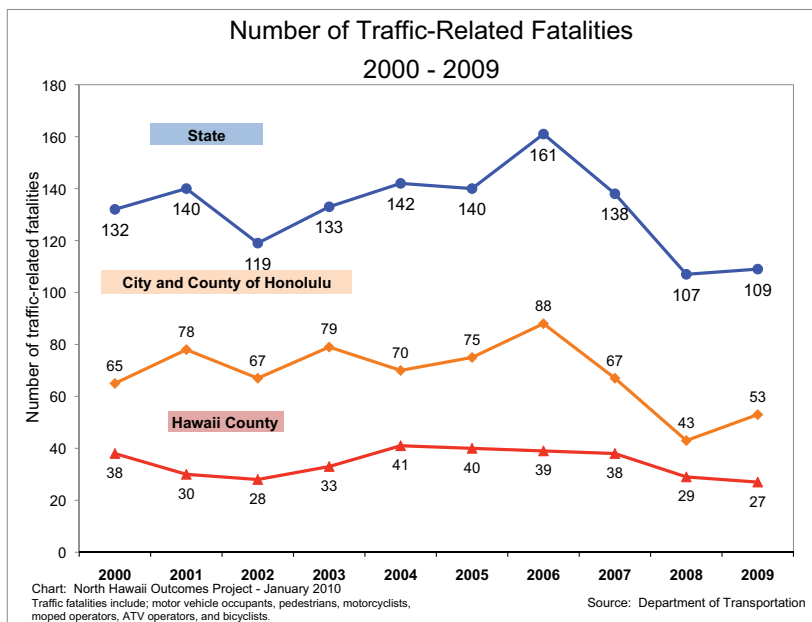
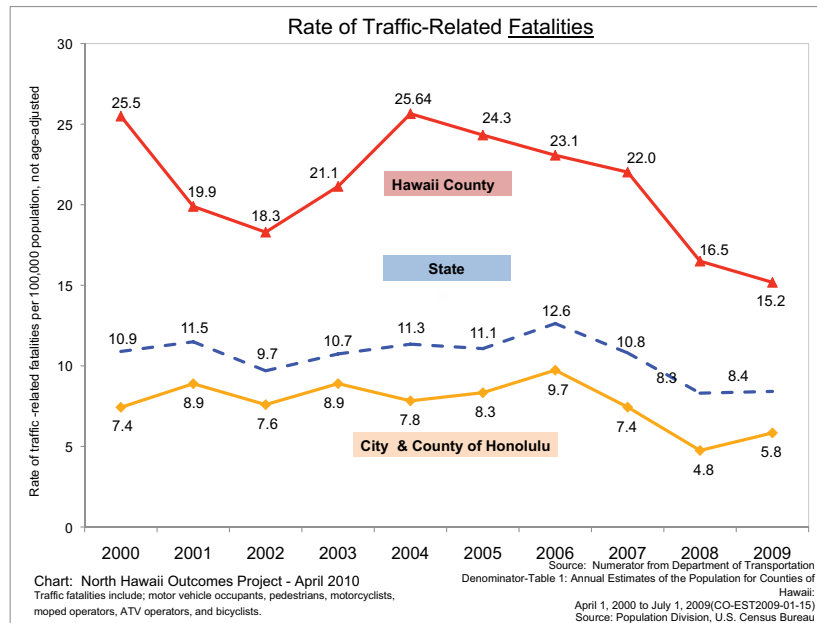


Aliyah Braden
December 2007 - May 2009

The Problem

Too Many People Die From Traffic Crashes on Hawaii County Roads

- The rate of traffic-related deaths in Hawaii County is nearly three times higher than the death rate in the City and County of Honolulu, between 2001 and 2009.
- Traffic-related fatalities include: motor vehicle occupants, pedestrians, motorcyclists, moped operators, ATV operators and bicyclists.
- A total of 343 people died from traffic crashes on Hawaii County roads, between 2000 – 2009. For the same time period, the average number of traffic-related deaths per year in Hawaii County was 34. The number of Hawaii County traffic deaths has decreased slightly each year since 2004.
- However, the number of traffic deaths for the first half of 2010, through June 30, 2010 is 19 compared to 14 for the same time frame from 2009. This reflects a 35% increase



The Problem

Impaired Driving From Alcohol is Responsible for More Than Half of the Traffic Deaths and far too many injuries in Hawaii County.

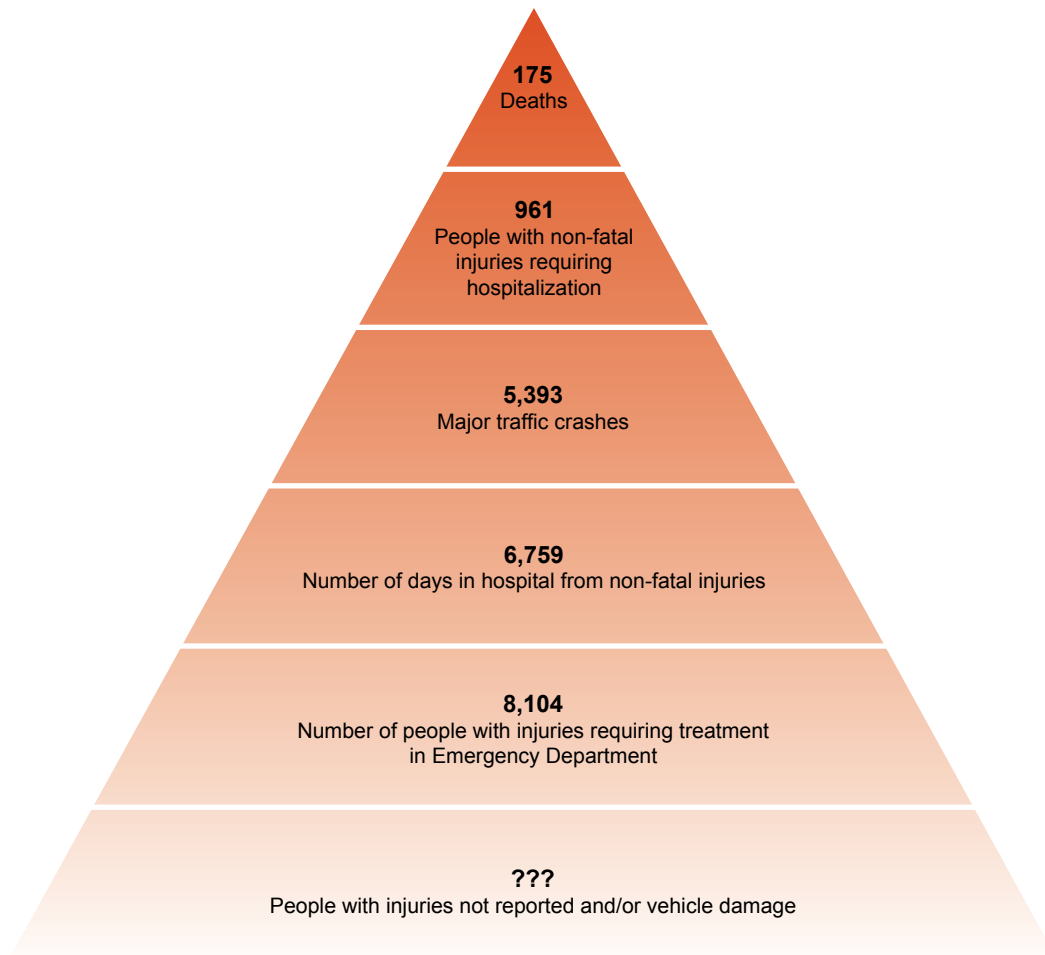
From 2000 – 2009:

- 343 people died from traffic crashes on Hawaii County roads.
- More than 171 people died from alcohol-related crashes on Hawaii County roads.

From 2006 – 2009:

- 8,104 people were injured in traffic crashes in Hawaii County and required treatment in an Emergency Department.

Deaths and Injuries in Hawaii County 2006 - 2009



Source: Dan Galanis, Ph.D., Department of Health, Injury Prevention and Control Program