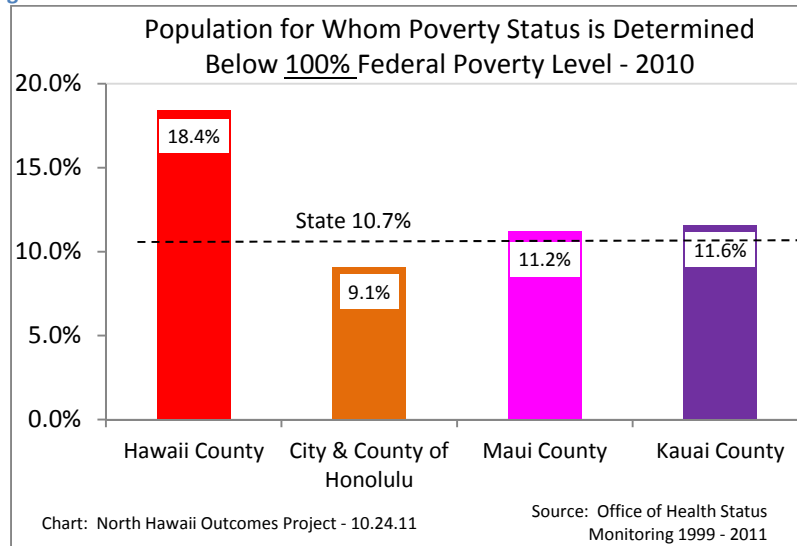


More Vulnerable Populations in Hawaii County

More Residents in Poverty

Hawaii County proportion of population below 100% of the federal poverty level is 18.4% compared to 9.1% for the City and County of Honolulu in 2010. The Hawaii County poverty rate is two times higher than the City and County of Honolulu.

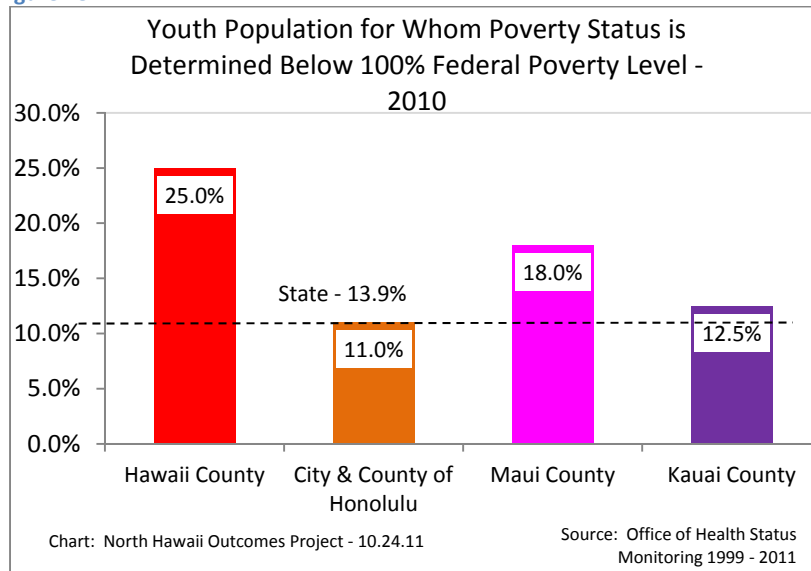
Figure 17



More Children in Poverty

Hawaii County has 25% of youth (children below 18 years of age) in poverty. The Hawaii County child poverty rate is more than two times higher than the child poverty rate for the City and County of Honolulu.

Figure 18

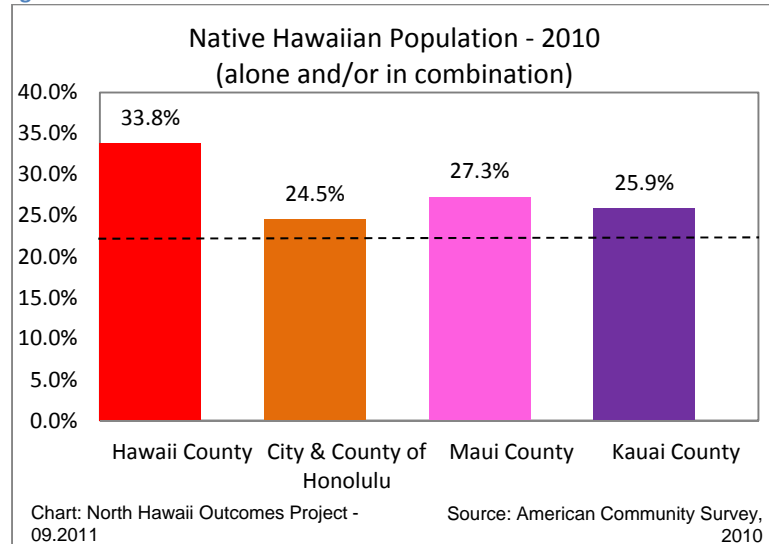


More Vulnerable Populations in Hawaii County

More Native Hawaiians in Hawaii County

Hawaii County has a higher proportion of self-reported Native Hawaiians at 33.8% compared to the City and County of Honolulu at 24.5%.

Figure 19



More Native Hawaiian's in North Hawaii

The Waimea –Puuanahulu census tract (217.02) has 42% self-reported Native Hawaiians compared to 33.8 % for Hawaii County, and 26.2% for the State.

Figure 20

